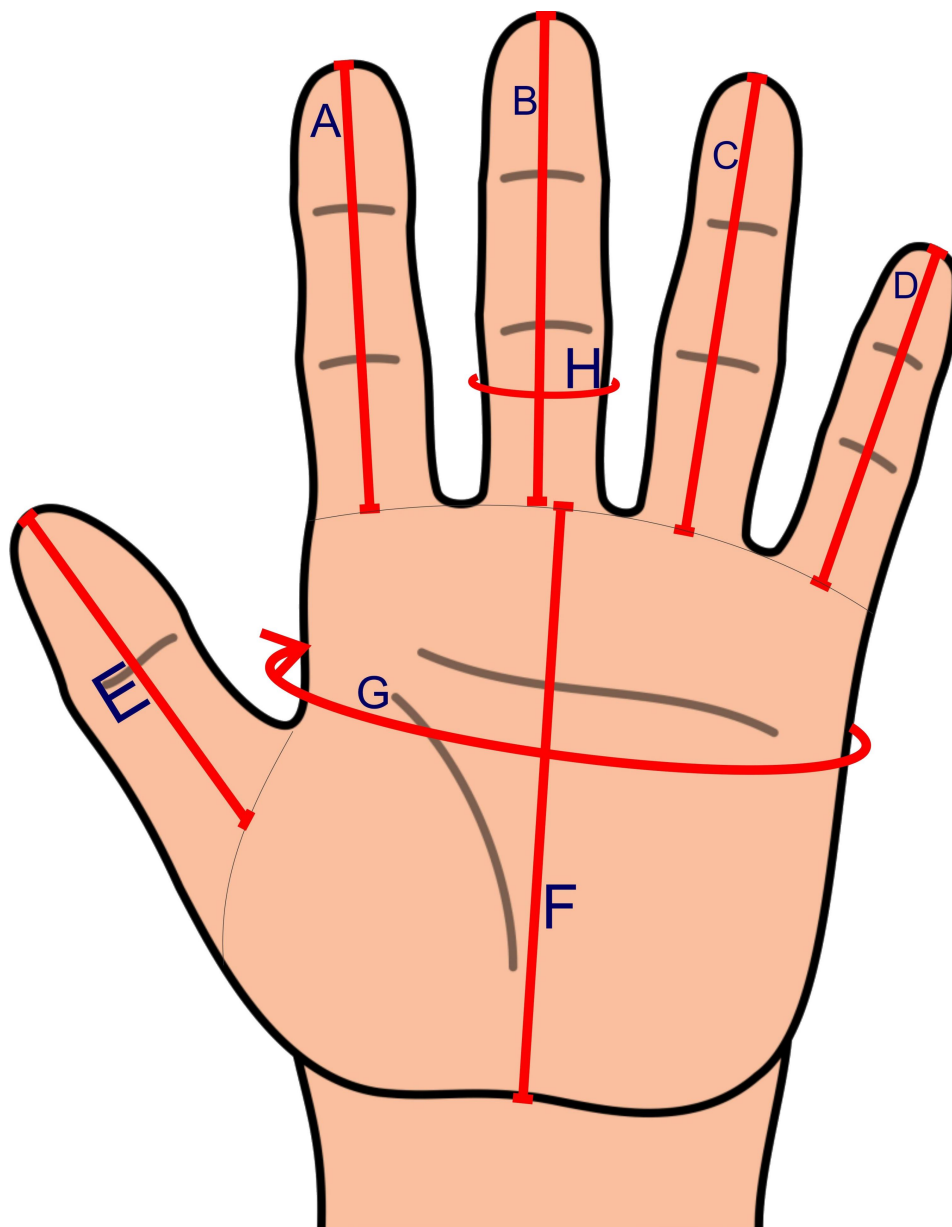



	Measurement Table Customer	Measurements without separate back protector (cm)	Measurement with separate back protector(CM)
1	Wrist		
2	Fore Arm (Sleeve bend)		
3	Elbow (Sleeve bend)		
4	Bicep (Sleeve bend)		
5	Around Armful (Very carefully!)		
6	Neck (Around Neck)		
7	Chest		X
8	Thinner Part of Waist (Above Navel line)		X
9	Waist Belly-Button (Navel line)		X
10	6 cm down from Belly-Button (Pant belt Waist line)		X
11	Hip		X
12	Upper Thigh (Under Crotch)		
13	Thigh (10 cm down from Crotch)		
14	Lower thinner Thigh (10 cm above from Side Knee)		
15	Knee		
16	Cuff		
17	Ankle		
18	Half Shoulder (Neck to shoulder)		
19	Full Shoulder (Shoulder to shoulder)		X
20	Back Length (Top Back Neck to Belly Button line)		X
21	Full back length (Back Neck to floor)		X
22	Front Shoulder to Belly Button line		
23	Front Neck Bone to Belly Button		
24	Sleeve length (Shoulder to Wrist) (Measurement take little curve sleeve) (Measurement take sleeve center shoulder to wrist)		
25	Elbow to Wrist (Sleeve bend / curve)		
26	Pant side length (Belly-Button line to Ankle)		
27	Waist to Knee (Belly-Button line to Knee)		
28	Knee to Ankle		
29	Inside Leg length (Crotch to Ankle)		
30	Crotch to Knee (Inside Leg length)		
31	Knee to Floor		
32	Circle (Over Front Shoulder to Back Shoulder - under crotch - between leg)		X
33	Circle (Front Belly-Button line to Back Belly-Button line under the crotch between leg)		X
34	Full Length (Top Head to floor)		X
35	----		X
36	----		X
37	----		X
38	Age		
39	Weight in KG		

SIGN HERE

DATE

Hereby I confirm those measurements taken and written down are correct.



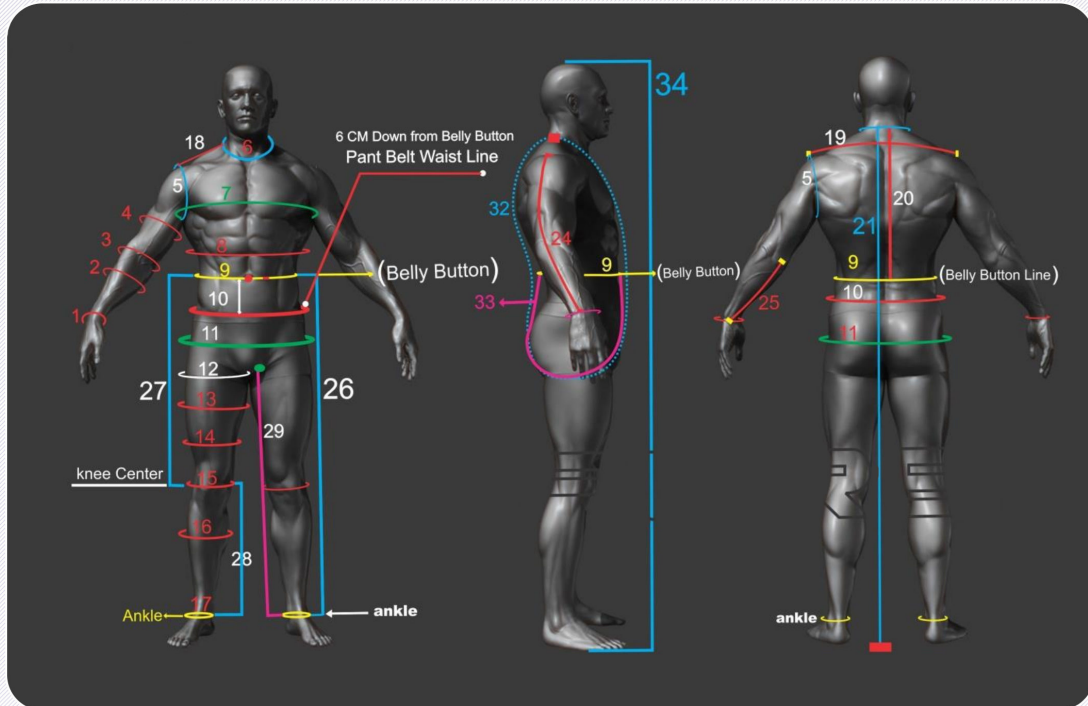
	Measurement Table Gloves Customer		Measurements in (cm)
A	Index Finger Length	(Straight - Slightly Open.)	
B	Middle Finger Length	(Straight - Slightly Open.)	
C	Ring Finger Length	(Straight - Slightly Open.)	
D	Pinky Finger Length	(Straight - Slightly Open.)	
E	Thumb Length	(Straight - Slightly Open.)	
F	Palm Height	(Open.)	
G	Palm Circumference		
H	Middle Finger Base Circumference		

SIGN HERE

DATE

Hereby I confirm those measurements taken and written down are correct.

MEASUREMENTS



Additional Measurements



SIGN HERE

DATE

Hereby I confirm those measurements taken and written down are correct.

Tipp:

Wrap a thin ribbon around your waist like in the fitting guide on page 2 No. 9 (Waist on Belly-Button height) so that the measurements taken will be more precise - Especially for No. 20, 22, 23, 26, 27, 28 and 31

Measurements

Please have a good look at the fitting guide on page 2 for clean measurements and do **NOT** wear jeans or shirt or loose clothes - **Only** skin-tight clothes or under garments while taking the measurements - Please let someone take measurements of you and please only take real measurements in centimeter - adding or removing values can lead to your new suit being unusable.

Seperate Back Protector

If you use a seperate back protector, please take and write down all relevant measurements once **WITH** protector and a second time **WITHOUT** protector - Please write down measurements taken **WITH** protector to the field next to the main fields (The fields on the RIGHT side from the main fields, marked with a red X)

Back Length Measurement No. 20

Please measure back length measurement no. 20 as follows: Stand with a straight back straight and your neck in a natural position (Normal, slightly curved).

Measurement No. 26

Measurement no. 26 (Belly-Button height to Ankle) should have an equal total length like no. 27 & no. 28 combined.

Measurements No. 21 & 34

For measurement no. 21 & 34, stand straight with your back on a wall without shoes and if possible - put a marker ontop of your head onto the wall which will be used for no. 21 & 34 for better and more precise results.

Fitting of the Suit

What kind of fitting do you prefer? Please put a tick as your answer in one of the following boxes:

☐

Sport Racing
SKIN-TIGHT FIT

☐

Super Moto
NORMAL/LOOSE FIT

☐

Street Racing
NORMAL/LOOSE FIT

Pictures for Measurement Purposes

Please take 3 pictures of yourself - from the front - from the side - from the back - We use those to archive a perfect fit and avoid any missfit or errors and further improve your suit.

SIGN HERE

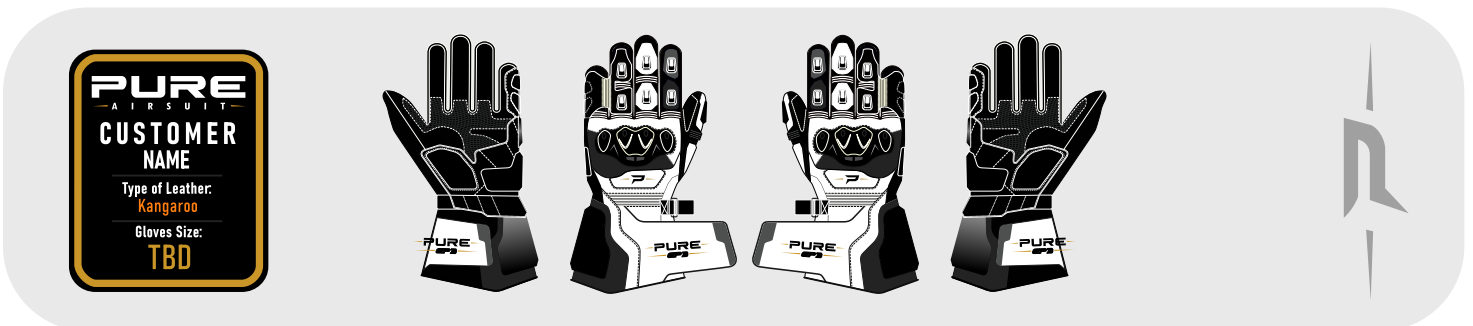
DATE

Hereby I confirm those measurements taken and written down are correct.

Customer:

- Suit Type: Airbag Suit

Version 00



Hereby our customer confirms to **PURE Sports Gear** that all the measurements and the final suit and gloves design has been **approved** by our customer _____.

Sign Here

Date